

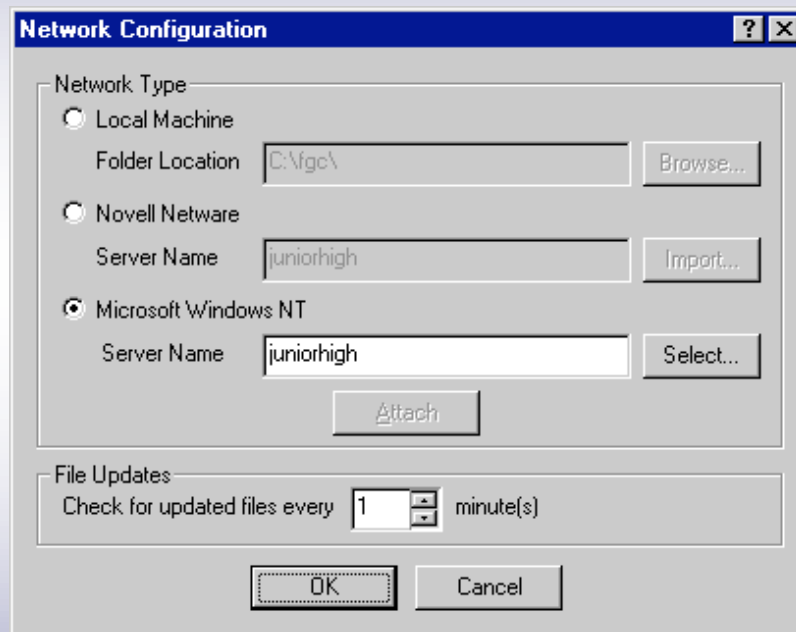


- **Central Control is the complete remote administration tool for [Fortres 101](#) and [Clean Slate](#)**
- **Central Control gives administrators the ability to centrally store and manage Fortres Grand security configuration files for all of the users on a Windows NT/2000/2003 or Novell NetWare network**
- **By building on the existing network users and groups, administrators can easily create configuration files based on groups and then assign users to these groups**
- **Because the configuration files are stored on the server, the user's security settings are automatically retrieved regardless of which computer they use.**

# At a glance:

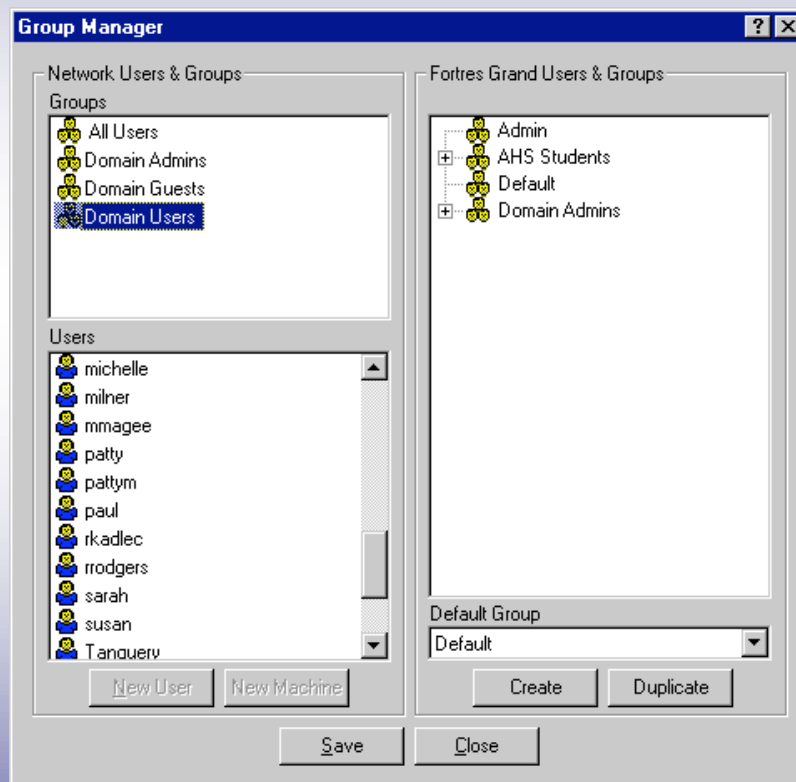
- **Complete remote administration** of your Fortres security software
- **Supports Windows NT/2000/2003** and Novell NetWare 4.1 and higher networks•Network add-on for [Fortres \\_101](#)
- **Network add-on** for [Fortres \\_101](#)
- **Save time!** Remotely alter security on every computer
- **Upgrade remote** [\\_Fortres 101](#)
- **Shut down, restart, or \_og off** remote [Fortres 101](#) and [Clean Slate](#) computers
- **Security settings** based on user or group are consistent on every networked computer
- **Remotely disable/enable** [Clean Slate](#) security at scheduled times
- **Create, delete, and edit** user-groups
- **Security settings follow users** to any computer on the network
- **Retrieve the existing users** in a Windows NT/2000/2003 Domain or Novell NDS tree to save valuable time
- **Drag and drop** users into any group
- **Customize Security** based on users or group
- **Licenses include media and free,** unlimited technical support
- **Installs in minutes**

# Client Side Configuration Screens



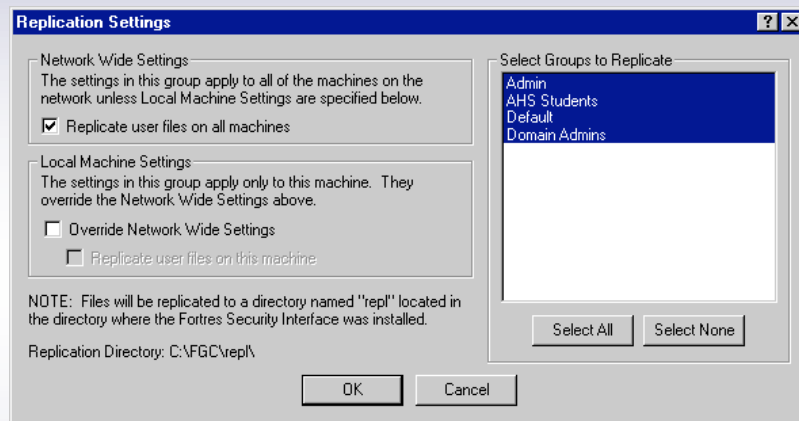
- Client computers can be configured to retrieve configuration files from a Central Control \_erver running on a Windows NT/2000/2003 or Novell NetWare network.

# Client Side Configuration Screens



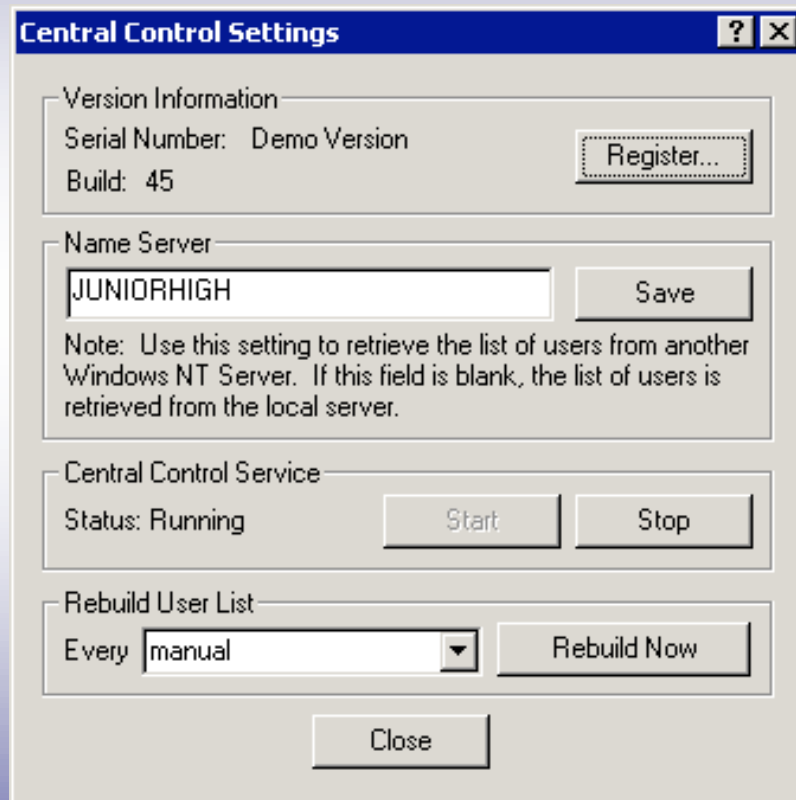
- Central Control can retrieve the existing users in a Windows NT/2000/2003 Domain or Novell\_DS tree to save valuable time

# Client Side Configuration Screens



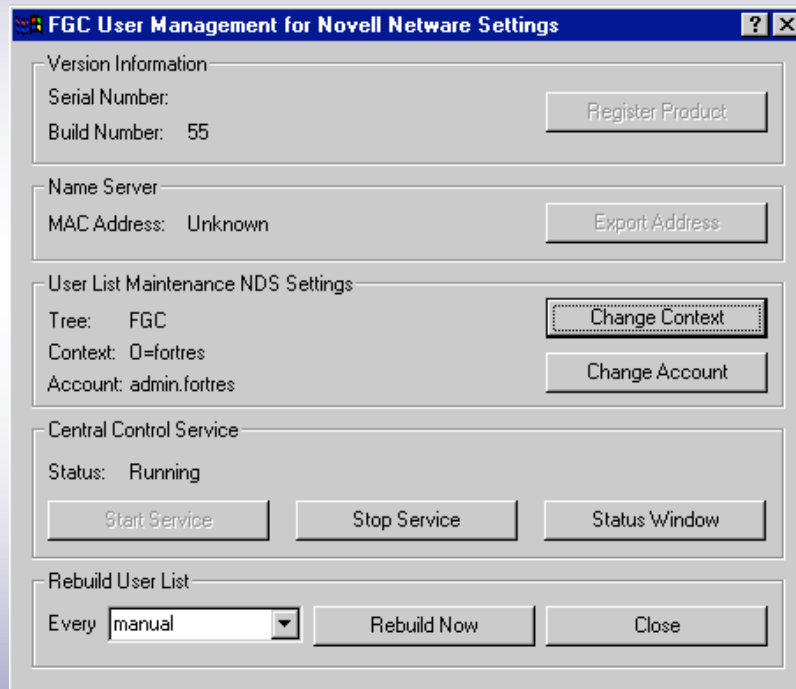
- When using Central Control, configuration files can be replicated from the server to the client computers for use if there are network problems.

# Server Side Configuration Screens



- On Windows NT/2000/2003 Server, the list of network users and groups can be retrieved from the local server or any other server on the network. Central Control can be configured to automatically refresh the list of network users and groups at different intervals or manually.

# Server Side Configuration Screens



- On a Novell NetWare network, Central Control runs on a Windows computer which acts as a proxy for the NetWare server. The NDS context where users and groups are gathered can be set, as well as how frequently Central Control scans for new users.